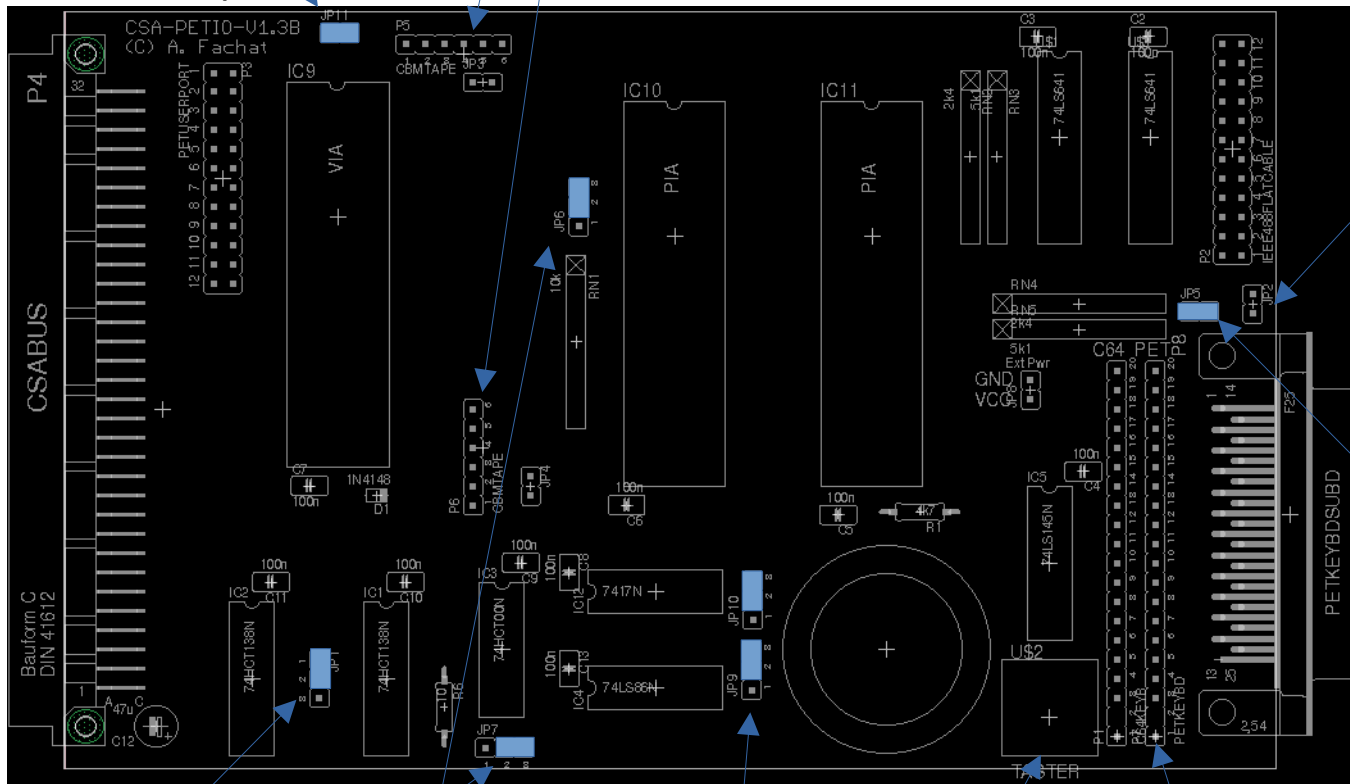


Shown are the Default jumper Connections as:



JP11 enables VCC on Userport VIDEO pin

JP3,JP4 enable Tape MTR output as TTL O.C. for T1 T2

JP2: Connect to UltraCPU or VDC board for Graphics switch and video interrupt

JP5: close to connect IEEE488 IFC with /RES

JP1 selects \$E8xx I/O space (alt. \$EFxx)

JP6, JP7 enable ATNA Handling (to work as drive)

JP9,JP10: 8 byte address windows for PIAs

DIAG Push button

Keyboard connectors for C64 or PET keyboards